

40TH



IRISH CONCRETE SOCIETY
Celebrating 50 Years

**IRISH CONCRETE SOCIETY
AWARDS**

CLAYTON HOTEL, BURLINGTON ROAD
25TH MARCH 2023



Enterprise Ireland: Proud to support Irish businesses

At Enterprise Ireland, we work with ambitious and innovative Irish companies across all sectors to help them grow and compete internationally. Whether it's funding, capability building or advice on exporting to new markets, we have the support to help you achieve your global ambition.

Visit globalambition.ie

 **ENTERPRISE
IRELAND**



Chairperson's introduction

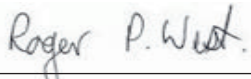
It is with great pleasure that I welcome you tonight, a milestone, to the 40th Irish Concrete Society Annual Awards in the 50th year of the existence of the Society.

It is an opportunity to celebrate the “promotion of excellence in the use of concrete” in all its forms, recognised in our Student, Sculpture, International, Infrastructure, Element and Building awards. The skill, talent and dedication of our predecessors in achieving excellence in concrete is exemplified in a display in the foyer of past winners of the awards in the various categories and I commend this exhibition to you. While there are challenges anew in the concrete industry, not least in playing our part in the sustainability agenda, reducing the embodied carbon of concrete and encouraging the use of recycled materials, we have consistently demonstrated our ability as an industry to modernise and to change over the last 50 year of the Society's activities, as exemplified by the legacy of our past award winners.

The future of the industry also relies on the emergence of the young people who will enter our profession through many routes, and so we should take every opportunity to support and mentor them, to pass on our knowledge and experience, so they too can realise their potential in an exciting, vibrant sector of the construction industry that involves concrete design and production in all its facets. Further to this, as an academic myself, I encourage and commend to those in the third level sector to continue to promote concrete as an essential discipline for teaching and research, and to especially maintain the excellence of the research projects leading to student nominations for the annual Sean de Courcy Student Award.

I would like to sincerely thank our corporate sponsors, on whom we rely so much, for their financial support for this evening's event. We, as a Society, are particularly indebted to Enterprise Ireland for sponsoring the International Award again tonight. Thank you also to all members of our judging panels, many of whom have traveled to sites around the country to observe first-hand the very high quality of the nominees' work with concrete.

In closing, may I thank you all for your support, for your attendance tonight, for submitting your entries and for adjudicating. On reflection, on this the occasion of the Society's 40th Annual Awards evening, we will observe tonight the continuing exceptionally high standard of concrete design and construction in Ireland, as mirrored in tonight's award winners, all of whom I wholeheartedly congratulate.



Roger P. West
Chair of the Society



The Irish Concrete Society gratefully acknowledges
the support of the following companies



ARUP

BANAGHER
PRECAST CONCRETE



Flood Group
Building With Confidence





PONS JCL

K
Kilsaran

MANNOK

MATTEST
MATTEST (IRELAND) LIMITED

PAUL
John Paul Construction
Go Further | Build Smarter™

roadstone
A CRH COMPANY

ROD
ROUGHAN & O'DONOVAN

BUILDING TRUST **Jika**®

TECHRETE

TII
Bonneagar Iompair Éireann
Transport Infrastructure Ireland

walls



IRISH CONCRETE SOCIETY

Celebrating 50 Years

A graphic consisting of two overlapping, irregular shapes with a speckled grey concrete texture. The top shape is a trapezoid pointing right, and the bottom shape is a larger trapezoid pointing left, overlapping the top one. A green trapezoid is overlaid on the top shape, containing the text.

MAIN AWARD
Building Category

COAL LANE HOUSE



BUILDING 1

Client
Architect
Engineer

Stephanie and Graham O'Sullivan
R. Graham O'Sullivan Architect
CORA

Contractor
Major Supplier

Drumlargen Construction
Roadstone



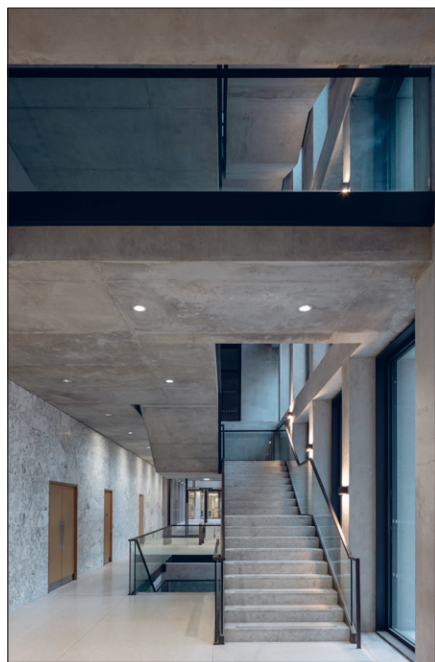


Client
Architect

ESB
Grafton Architects / O'Mahony
Pike Architects
O'Connor Sutton Cronin

Contractor
Major Supplier

Admore Structures / P.J. Hegarty
& Sons
Roadstone / Techrete



APARTHOTEL, MARK STREET, DUBLIN 2



BUILDING **3**

Client
Architect
Engineer

Tetrarch Capital
DTA Architects
Barrett Mahony Consulting Engineers

Contractor
Major Supplier

Admore Structures
Maganey Precast





Client
Architect
Engineer

HSE West
MCA Architects
T.J. O'Connor & Associates

Contractor
Major Supplier

John Paul Construction /
RAPS Construction
Roadstone



KILDARE VILLAGE OUTLET MULTI STOREY CARPARK



BUILDING 5

Client
Architect
Engineer

Value Retail
Lyons+Sleeman+Hoare
Aecom

Contractor
Major Supplier

John Paul Construction
Concast





Client
Architect

Grant Thornton
MCA Architects / Shay
Cleary Architects
O'Connor Sutton Cronin

Contractor
Major Supplier

Bennett Construction
Kilsaran

Engineer



10-12 HANOVER QUAY



BUILDING 7

Client
Architect
Engineer

Kennedy Wilson
MOLA Architecture / O'Mahony Pike
Barrett Mahony Consulting Engineers

Contractor
Major Supplier

John Sisk & Son
Kilsaran





Client
Architect
Engineer

JCD Group
Wilson Architecture
Murphy Matson O'Sullivan
Consulting Engineers

Contractor
Major Supplier

P.J. Hegarty & Sons
Techrete





Client
Architect
Engineer

Marlet Property Group
Henry J Lyons
O'Connor Sutton Cronin

Contractor
Major Supplier

Walls Construction
Kilsaran / Techrete



GRANGEGORMAN CENTRAL QUAD



BUILDING 10

Client
Architect
Engineer

Technological University Dublin
Feilden Clegg Bradley Studios
Mott McDonald

Contractor
Major Supplier

John Sisk & Son - FCC
Construction JV
Roadstone / Techrete



THE BOTTLEWORKS, BARROW STREET



BUILDING 11

Client Jones Investments
Architect Henry J Lyons
Engineer CS Consulting Group

Contractor John Sisk & Son
Major Supplier Capital Formwork / Roadstone

John Sisk & Son
Capital Formwork / Roadstone





IRISH CONCRETE SOCIETY
Celebrating 50 Years

A graphic featuring a light grey concrete texture with a blue trapezoidal overlay. The text is centered within the blue area, flanked by horizontal dotted lines.

MAIN AWARD
Infrastructure Category



IRISH CONCRETE SOCIETY
Celebrating 50 Years

CLONCREEN WIND FARM



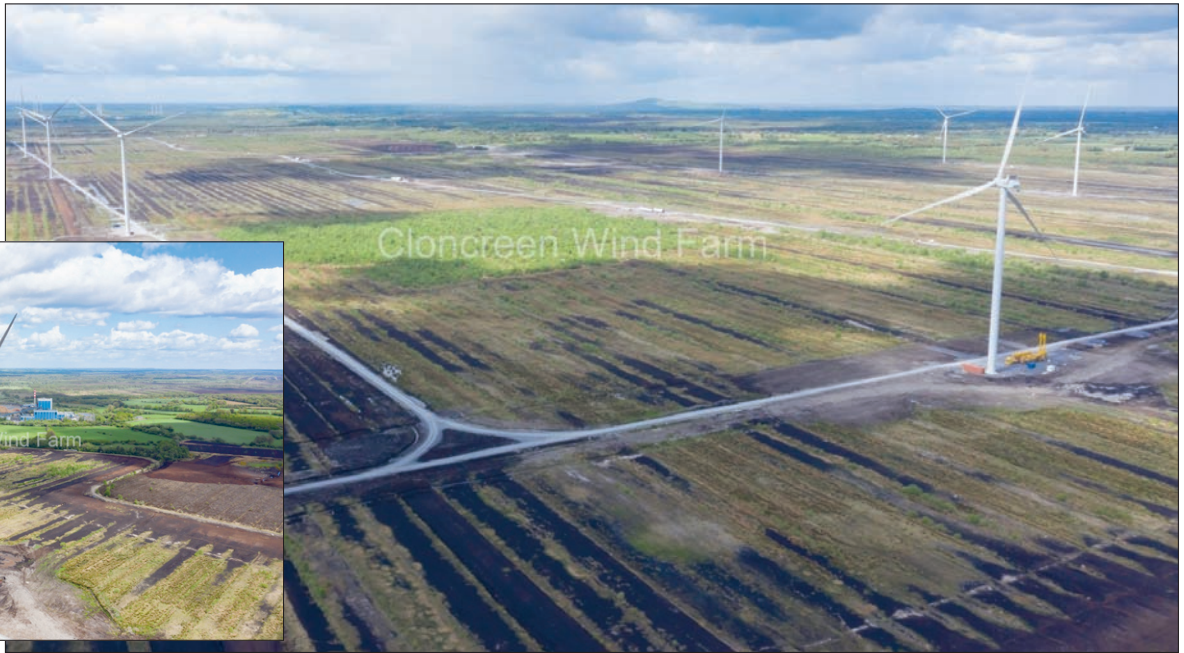
INFRASTRUCTURE 1

Client
Engineer

Bord na Móna
Sweco

Contractor
Major Supplier

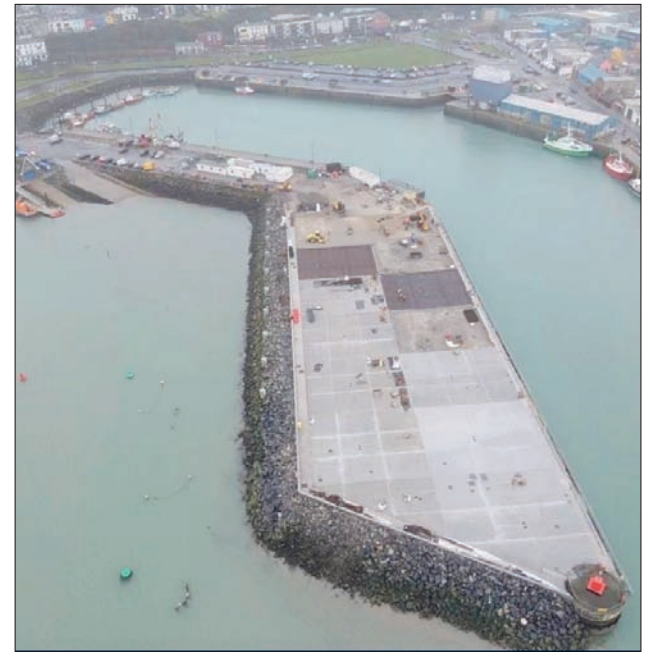
Farrans Construction
B.D. Flood / Roadstone





Client Department of Agriculture
Food and the Marine
Engineer MWP

Contractor John Sisk & Son
Major Supplier Roadstone



RINGASKIDDY PORT REDEVELOPMENT – CORK CONTAINER TERMINAL



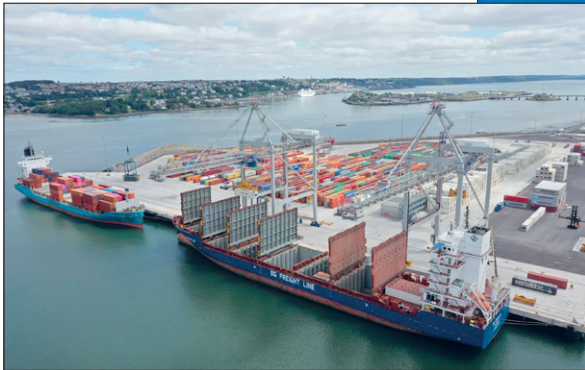
INFRASTRUCTURE **3**

Client
Designer
Engineer

Port Of Cork
RPS
MWP

Contractor
Major Supplier

BAM Ireland
Banagher Precast
Concrete / Roadstone



PROJECT LEIXLIP



INFRASTRUCTURE 4

Client Private
Designer Exyte
Engineer Jacobs

Contractor
Major Supplier

BAM Ireland / Exyte
Banagher Precast Concrete /
Midland Steel / Roadstone



BLANCHARDSTOWN DRAINAGE SCHEME



INFRASTRUCTURE 5

Client
Designer / Engineer

Irish Water
ByrneLooby An
Ayesa Company

Contractor
Major Supplier

Ward & Burke
Kilsaran / Tracey Concrete





Client
Designer / Engineer

Irish Water
Nicholas O'Dwyer

Contractor
Major Supplier

Murphy International
Kilsaran



LEE ROAD WATER TREATMENT PLANT, CORK



INFRASTRUCTURE 7

Client
Designer / Engineer

Irish Water
FGCL

Contractor
Major Supplier

Murphy Ireland
Hickey Formwork / Roadstone



NAVAN REGENERATION, NAVAN TOWN CENTRE



INFRASTRUCTURE 8

Client
Designer
Engineer

Meath County Council
Brady Shipman Martin
Clifton Scannell Emerson Associates

Contractor
Major Supplier

John Cradock
Kilsaran



N22 SULLANE AND LANEY RIVER BRIDGES



INFRASTRUCTURE 9

Client Transport Infrastructure Ireland
Designer Barry Transportation
Engineer Barry Transportation / Martin
Heffernan Consulting / Mott McDonald

Contractor
Major Supplier

Jons Civil Engineering - John Cradock JV
Banagher Precast Concrete / Roadstone



A graphic featuring a light grey concrete texture with a prominent red trapezoidal shape overlaid on it. The red shape contains white text. The text is framed by two horizontal dotted lines.

MAIN AWARD
Element Category



IRISH CONCRETE SOCIETY
Celebrating 50 Years

HOUSE BY THE SEA, NORTH DUBLIN



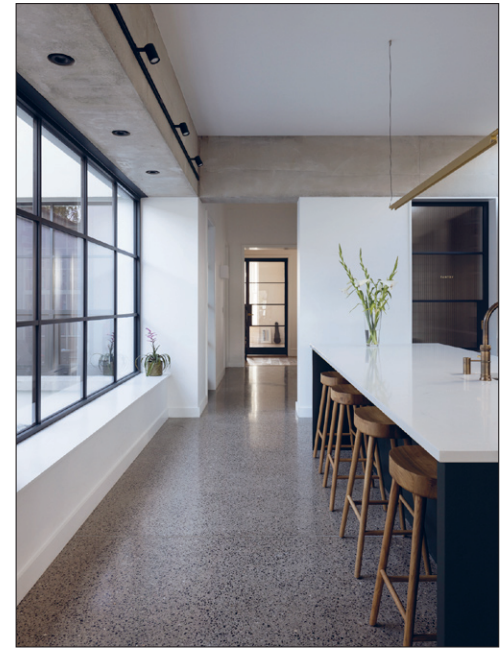
ELEMENT 1

Client
Architect
Engineer

Private
Arigho Larmour Wheeler Architects
OBA Consulting Engineers

Contractor
Major Supplier

McGovern Builders
Uniqrete





Client
Architect
Engineer

Private
Brennan Furlong Architects
& Urban Planners
Brackfield Consulting

Contractor
Major Supplier

Caracon Building & Civil
Engineering
Roadstone



THE STILES ROAD



ELEMENT **3**

Client
Architect
Engineer

Private
Brennan Furlong Architects
& Urban Planners
RS Consulting Engineers

Contractor
Major Supplier

Clarke Construction
Nolans Group Conservation
& Restoration



KILMACUD HOUSE



ELEMENT 4

Client
Architect
Engineer

Richmond Homes
Altu Architects
CS Consulting Group

Contractor
Major Supplier

John Sisk & Son
Kilsaran



TERMINAL 4 ALEXANDRA ROAD BRIDGE ARCHITECTURAL FAÇADE



ELEMENT **5**

Client
Architect
Engineer

Dublin Port Company
Darmody Architecture
DBFL Consulting Engineers

Contractor
Major Supplier

John Sisk & Son
Roadstone





Client
Architect

ESB
Grafton Architects / O'Mahony
Pike Architects

Engineer
Major Supplier

O'Connor Sutton Cronin
Techrete



LIFFEY VALLEY SHOPPING CENTRE EXTENSION



ELEMENT 7

Client
Architect
Engineer

Liffey Valley Management
Henry J Lyons
Niall Montgomery + Partners

Contractor
Major Supplier

Vision Contracting
Kilsaran



FRASCATI SHOPPING CENTRE, BLACKROCK



ELEMENT 8

Client
Architect
Engineer

Frascati Investments 2012
Newman Mulligan & Associates
Stephen Diamond Associates

Contractor
Major Supplier

Collen Construction / Premier Paving
Kilsaran



CANTILEVER STAIRS, PIM STREET, DUBLIN



ELEMENT 9

Client
Architect

Private
FKP Architects

Contractor
Major Supplier

Midlands Construction
BrianFormwork / Roadstone



Client
Architect
Engineer

Sligo County Council
Keys and Monaghan Architects
Taylor & Boyd

Contractor
Major Supplier

Arken Construction
Flood Precast



A graphic featuring a grey concrete texture background with a yellow banner in the center. The banner contains the text 'INTERNATIONAL AWARD' in white, bold, uppercase letters, flanked by two horizontal dotted lines.

INTERNATIONAL AWARD



IRISH CONCRETE SOCIETY
Celebrating 50 Years

SPACE PARK, UNIVERSITY OF LEICESTER



INTERNATIONAL 1

Irish Company

Kilsaran

Location

Leicester, UK



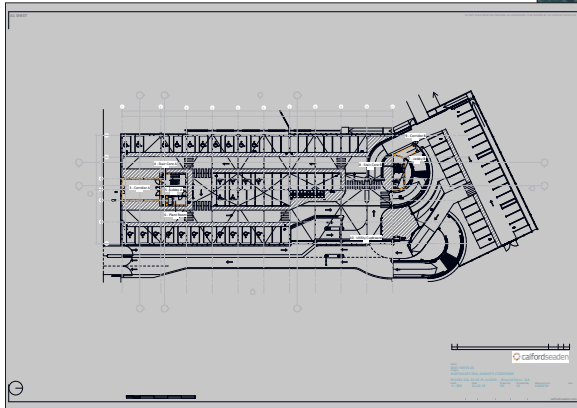


Irish Company

Concast

Location

Bishop's Stortford, Hertfordshire, UK



HMP, FIVE WELLS



INTERNATIONAL 3

Irish Company

Banagher Precast Concrete

Location

Wellingborough, Northamptonshire, UK





Irish Company

Kilsaran Precast

Location

Wallingford, Oxfordshire, UK





Irish Company

Techrete

Location

Wandsworth, London, UK





Irish Company

Techrete

Location

UCL East, London, UK



MALDRON HOTEL, CHARLES STREET



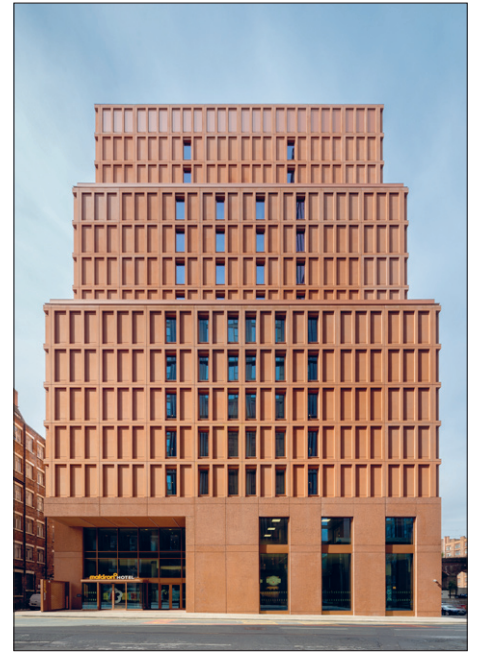
INTERNATIONAL 7

Irish Company

Techrete

Location

Manchester, UK



A graphic featuring a dark red, trapezoidal shape with a white border, set against a light grey, textured background that resembles concrete. The text "SCULPTURE AWARD" is centered within the red shape in a bold, white, sans-serif font. The background consists of two overlapping, irregular shapes that also have a concrete-like texture.

SCULPTURE AWARD



IRISH CONCRETE SOCIETY
Celebrating 50 Years



Artist James Hayes Sculpture Title Protectour





Artist Barry Mulpeter

Sculpture Title Bee Aware





Artist

Niamh McCann

Sculpture Title

Bile Buadha





Artist

Ciara Patricia Langan

Sculpture Title

SIX





Artist Ken Drew

Sculpture Title Polished Growth





Artist

Niall Cullen

Sculpture Title

Build It and They Will Come





Artist

Sallyanne Morgan

Sculpture Title

Missing Things





Artist

Sallyanne Morgan

Sculpture Title

Instrument





Artist Wendy Miles

Sculpture Title Girl with a Bird





Artist

Seiko Hayase

Sculpture Title

Buried Heart





Artist

Kate McSharry

Sculpture Title

And Rest, Close
Enough (Not) to Touch





IRISH CONCRETE SOCIETY

Celebrating 50 Years



Méabh Childs, Trinity College Dublin

The Role of Notches in the Bond Behaviour of Sustainable Bamboo Reinforced Concrete

Bamboo culms have been used as a substitute for steel reinforcement in concrete due to their relatively high tensile strength and many environmental benefits. However, their effectiveness is inhibited by the lack of bond strength between the two materials, which can cause the bamboo to slip within a concrete element when a flexural load is applied to a beam.

This research developed a solution to this bond problem by cutting indentations, or notches, in appropriate parts of a bamboo culms a significant improvement in the anchorage between the two materials can be obtained. The purpose of the notches is to improve the anchorage between the two materials by utilising the shear resistance between the concrete in the notches and the surrounding concrete. Tensile and pull-out tests were performed which indicated the optimal notching arrangement that maximised the bond without compromising the beam's overall load capacity.

The knowledge obtained from this research improves the feasibility of using sustainable bamboo as reinforcement in concrete.



AWARDS JUDGING CRITERIA



Main Awards

The Award Scheme is organised to enable the Society to acknowledge construction achievements in which concrete, in any form contributes significantly to the built environment. Entries relating to the contribution made by concrete to any aspect of building, civil engineering, architecture, art, or landscaping will be accepted by the Society.

Entries are subdivided into three categories:

- Building
- Infrastructure
- Element (housing or small projects e.g. walls, stairs, paving)

The jury will consider awarding special recognition for the use of concrete in a sustainable context.

There will be one overall winner chosen, with category winners in the other sections, depending on the level and quality of entries.

International Award

The jury will judge entries on the basis of the following criteria:

- Technical excellence in the use of concrete displayed by the Irish entrant company.
- Demonstration of a commitment to sustainability.
- Use or development of an innovative solution to overcome a technical challenge.
- Representing a significant achievement for the Irish entrant company, illustrating both ambition and innovation in the company's overseas target markets.

**** all text taken directly from this year's competition entry forms***



IRISH CONCRETE SOCIETY
Celebrating 50 Years

40TH



IRISH CONCRETE SOCIETY AWARDS

For more information on the
Irish Concrete Society Award Scheme
please visit our website: www.concrete.ie